



# A Minor

A Natural Minor



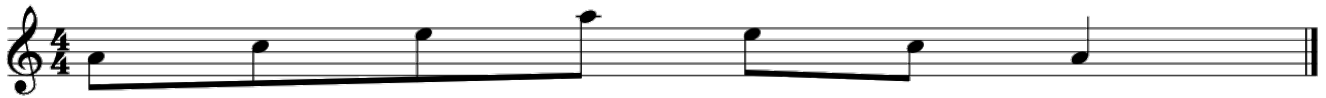
3 A Harmonic Minor



5 A Melodic Minor



7 A Minor Arpeggio



8 A Minor Broken Chord



13 A Minor Thirds



# E Minor

1 E Natural Minor



Musical notation for E Natural Minor scale in 4/4 time, starting on E4. The scale is: E4, F4, G4, A4, B4, C5, D5, E5, D5, C5, B4, A4, G4, F4, E4.

5 E Harmonic Minor



Musical notation for E Harmonic Minor scale in 4/4 time, starting on E4. The scale is: E4, F4, G4, A4, B4, C#5, D5, E5, D5, C#5, B4, A4, G4, F4, E4.

9 E Melodic Minor



Musical notation for E Melodic Minor scale in 4/4 time, starting on E4. The scale is: E4, F4, G4, A4, B4, C#5, D5, E5, D5, C#5, B4, A4, G4, F4, E4.

13 E Minor Arpeggio



Musical notation for E Minor Arpeggio in 4/4 time, starting on E4. The notes are: E4, G4, B4, E5, D5, C#5, B4, A4, G4, F4, E4.

15 E Minor Broken Chord



Musical notation for E Minor Broken Chord in 4/4 time, starting on E4. The notes are: E4, G4, B4, E5, D5, C#5, B4, A4, G4, F4, E4.

20 E Minor Thirds



Musical notation for E Minor Thirds in 4/4 time, starting on E4. The notes are: E4, G4, B4, E5, D5, C#5, B4, A4, G4, F4, E4.

22



Musical notation for E Minor scale with accidentals in 4/4 time, starting on E4. The notes are: E4, F4, G4, A4, B4, C#5, D5, E5, D5, C#5, B4, A4, G4, F4, E4.

# D Minor

1 D Natural Minor



Musical notation for D Natural Minor in 4/4 time, starting on a treble clef with a one-flat key signature. The melody consists of eighth notes: D4-E4-F4-G4 (quarter), A4-B4-C5 (quarter), B4-A4-G4 (quarter), F4-E4-D4 (quarter), C4-B3-A3 (quarter), G3-F3-E3 (quarter), D3-C3-B2 (quarter), A2-G2-F2 (quarter), E2-D2 (quarter), C2-B1 (quarter), A1-G1 (quarter), F1-E1 (quarter), D1 (half).

5 D Harmonic Minor



Musical notation for D Harmonic Minor in 4/4 time, starting on a treble clef with a one-flat key signature. The melody consists of eighth notes: D4-E4-F4-G4 (quarter), A4-B4-C5 (quarter), B4-A4-G4 (quarter), F4-E4-D4 (quarter), C4-B3-A3 (quarter), G3-F3-E3 (quarter), D3-C3-B2 (quarter), A2-G2-F2 (quarter), E2-D2 (quarter), C2-B1 (quarter), A1-G1 (quarter), F1-E1 (quarter), D1 (half).

9 D Melodic Minor



Musical notation for D Melodic Minor in 4/4 time, starting on a treble clef with a one-flat key signature. The melody consists of eighth notes: D4-E4-F4-G4 (quarter), A4-B4-C5 (quarter), B4-A4-G4 (quarter), F4-E4-D4 (quarter), C4-B3-A3 (quarter), G3-F3-E3 (quarter), D3-C3-B2 (quarter), A2-G2-F2 (quarter), E2-D2 (quarter), C2-B1 (quarter), A1-G1 (quarter), F1-E1 (quarter), D1 (half).

13 D Minor Arpeggio



Musical notation for D Minor Arpeggio in 4/4 time, starting on a treble clef with a one-flat key signature. The melody consists of eighth notes: D4-E4-F4-G4 (quarter), A4-B4-C5 (quarter), B4-A4-G4 (quarter), F4-E4-D4 (quarter), C4-B3-A3 (quarter), G3-F3-E3 (quarter), D3-C3-B2 (quarter), A2-G2-F2 (quarter), E2-D2 (quarter), C2-B1 (quarter), A1-G1 (quarter), F1-E1 (quarter), D1 (half).

15 D Minor Broken Chord



Musical notation for D Minor Broken Chord in 4/4 time, starting on a treble clef with a one-flat key signature. The melody consists of eighth notes: D4-E4-F4-G4 (quarter), A4-B4-C5 (quarter), B4-A4-G4 (quarter), F4-E4-D4 (quarter), C4-B3-A3 (quarter), G3-F3-E3 (quarter), D3-C3-B2 (quarter), A2-G2-F2 (quarter), E2-D2 (quarter), C2-B1 (quarter), A1-G1 (quarter), F1-E1 (quarter), D1 (half).

20 D Minor Thirds



Musical notation for D Minor Thirds in 4/4 time, starting on a treble clef with a one-flat key signature. The melody consists of eighth notes: D4-E4-F4-G4 (quarter), A4-B4-C5 (quarter), B4-A4-G4 (quarter), F4-E4-D4 (quarter), C4-B3-A3 (quarter), G3-F3-E3 (quarter), D3-C3-B2 (quarter), A2-G2-F2 (quarter), E2-D2 (quarter), C2-B1 (quarter), A1-G1 (quarter), F1-E1 (quarter), D1 (half).

22



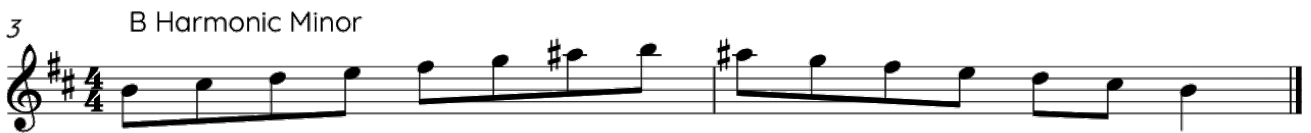
Musical notation for D Minor in 4/4 time, starting on a treble clef with a one-flat key signature. The melody consists of eighth notes: D4-E4-F4-G4 (quarter), A4-B4-C5 (quarter), B4-A4-G4 (quarter), F4-E4-D4 (quarter), C4-B3-A3 (quarter), G3-F3-E3 (quarter), D3-C3-B2 (quarter), A2-G2-F2 (quarter), E2-D2 (quarter), C2-B1 (quarter), A1-G1 (quarter), F1-E1 (quarter), D1 (half).

# B Minor

1 B Natural Minor



3 B Harmonic Minor



5 B Melodic Minor



7 B Minor Arpeggio



9 B Minor Broken Chord



13



17 B Minor Thirds



19



# G Minor

1 G Natural Minor



Musical notation for G Natural Minor scale in 4/4 time, starting on G4. The scale consists of eight notes: G, A, Bb, C, D, Eb, F, G.

3 G Harmonic Minor



Musical notation for G Harmonic Minor scale in 4/4 time, starting on G4. The scale consists of eight notes: G, A, Bb, C, D, Eb, F#, G.

5 G Melodic Minor



Musical notation for G Melodic Minor scale in 4/4 time, starting on G4. The scale consists of eight notes: G, A, Bb, C, D, Eb, F#, G.

7 G Minor Arpeggio



Musical notation for G Minor Arpeggio in 4/4 time, starting on G4. The notes are G, Bb, D, Eb, G.

8 G Minor Broken Chord



Musical notation for G Minor Broken Chord in 4/4 time, starting on G4. The notes are G, Bb, D, Eb, G, Bb, D, Eb, G, Bb, D, Eb, G.

13 G Minor Thirds



Musical notation for G Minor Thirds in 4/4 time, starting on G4. The notes are G, Bb, D, Eb, G, Bb, D, Eb, G, Bb, D, Eb, G.

# C Minor

1 C Natural Minor



Musical notation for C Natural Minor scale in 4/4 time, starting on middle C. The scale consists of eight notes: C, D, E-flat, F, G, A-flat, B-flat, and C.

5 C Harmonic Minor



Musical notation for C Harmonic Minor scale in 4/4 time, starting on middle C. The scale consists of eight notes: C, D, E-flat, F, G, A-flat, B-natural, and C.

9 C Melodic Minor



Musical notation for C Melodic Minor scale in 4/4 time, starting on middle C. The scale consists of eight notes: C, D, E-flat, F, G, A-natural, B-natural, and C.

13 C Minor Arpeggio



Musical notation for C Minor Arpeggio in 4/4 time, starting on middle C. The notes are C, E-flat, G, and C, played in a descending sequence.

15 C Minor Broken Chord



Musical notation for C Minor Broken Chord in 4/4 time, starting on middle C. The notes are C, E-flat, G, and C, played in a descending sequence with a rhythmic pattern.

20 C Minor Thirds



Musical notation for C Minor Thirds in 4/4 time, starting on middle C. The notes are C, E-flat, G, and C, played in a descending sequence with a rhythmic pattern.

22



Musical notation for a C Minor scale exercise in 4/4 time, starting on middle C. The notes are C, D, E-flat, F, G, A-flat, B-flat, and C, played in a descending sequence with a rhythmic pattern.

# F# Minor

1 F# Natural Minor



5 F# Harmonic Minor



9 F# Melodic Minor



13 F# Minor Arpeggio



15 F# Minor Broken Chord



20 F# Minor Thirds



22



# F Minor

1 F Natural Minor



Musical notation for the F Natural Minor scale in 4/4 time, starting on middle C (F4). The scale consists of the notes F, G, A, Bb, C, D, Eb, F. The notation shows the first four measures of the scale.

5 F Harmonic Minor



Musical notation for the F Harmonic Minor scale in 4/4 time, starting on middle C (F4). The scale consists of the notes F, G, A, Bb, C, D, Eb, F. The notation shows the first four measures of the scale.

9 F Melodic Minor



Musical notation for the F Melodic Minor scale in 4/4 time, starting on middle C (F4). The scale consists of the notes F, G, A, Bb, C, D, Eb, F. The notation shows the first four measures of the scale.

13 F Minor Arpeggio



Musical notation for the F Minor Arpeggio in 4/4 time, starting on middle C (F4). The notes are F, Ab, C, Eb. The notation shows the first four measures of the arpeggio.

15 F Minor Broken Chord



Musical notation for the F Minor Broken Chord in 4/4 time, starting on middle C (F4). The notes are F, Ab, C, Eb. The notation shows the first four measures of the broken chord.

20 F Minor Thirds



Musical notation for the F Minor Thirds in 4/4 time, starting on middle C (F4). The notes are F, Ab, C, Eb. The notation shows the first four measures of the thirds.

22



Musical notation for the continuation of the F Minor scale in 4/4 time, starting on middle C (F4). The notes are F, G, A, Bb, C, D, Eb, F. The notation shows the last four measures of the scale.

# C# Minor

1 C# Natural Minor



Musical notation for C# Natural Minor scale in 4/4 time, starting on middle C (C4). The scale consists of eight notes: C4, D4, E4, F#4, G4, A4, B4, and C5. The notes are written on a treble clef staff with a key signature of three sharps (F#, C#, G#).

5 C# Harmonic Minor



Musical notation for C# Harmonic Minor scale in 4/4 time, starting on middle C (C4). The scale consists of eight notes: C4, D4, E4, F#4, G4, A4, B4, and C#5. The notes are written on a treble clef staff with a key signature of three sharps (F#, C#, G#).

9 C# Melodic Minor



Musical notation for C# Melodic Minor scale in 4/4 time, starting on middle C (C4). The scale consists of eight notes: C4, D4, E4, F#4, G4, A4, B4, and C#5. The notes are written on a treble clef staff with a key signature of three sharps (F#, C#, G#).

13 C# Minor Arpeggio



Musical notation for C# Minor Arpeggio in 4/4 time, starting on middle C (C4). The notes are C4, E4, G4, B4, A4, F#4, E4, and C4. The notes are written on a treble clef staff with a key signature of three sharps (F#, C#, G#).

15 C# Minor Broken Chord



Musical notation for C# Minor Broken Chord in 4/4 time, starting on middle C (C4). The notes are C4, E4, G4, B4, A4, F#4, E4, and C4. The notes are written on a treble clef staff with a key signature of three sharps (F#, C#, G#).

20 C# Minor Thirds



Musical notation for C# Minor Thirds in 4/4 time, starting on middle C (C4). The notes are C4, E4, G4, B4, A4, F#4, E4, and C4. The notes are written on a treble clef staff with a key signature of three sharps (F#, C#, G#).

22



Musical notation for C# Minor scale in 4/4 time, starting on middle C (C4). The notes are C4, D4, E4, F#4, G4, A4, B4, and C5. The notes are written on a treble clef staff with a key signature of three sharps (F#, C#, G#).

# Bb Minor

1 Bb Natural Minor



Musical notation for the Bb Natural Minor scale, starting on middle C (C4) and spanning one octave. The notes are: C4, Bb3, Ab3, Gb3, F3, Eb3, D3, C3. The key signature has three flats (Bb, Eb, Ab) and the time signature is 4/4.

5 Bb Harmonic Minor



Musical notation for the Bb Harmonic Minor scale, starting on middle C (C4) and spanning one octave. The notes are: C4, Bb3, Ab3, Gb3, F3, Eb3, D#3, C3. The key signature has three flats (Bb, Eb, Ab) and the time signature is 4/4.

9 Bb Melodic Minor



Musical notation for the Bb Melodic Minor scale, starting on middle C (C4) and spanning one octave. The notes are: C4, Bb3, Ab3, Gb3, F3, Eb3, D#3, C3. The key signature has three flats (Bb, Eb, Ab) and the time signature is 4/4.

13 Bb Minor Arpeggio



Musical notation for the Bb Minor Arpeggio, starting on middle C (C4) and spanning one octave. The notes are: C4, Bb3, Ab3, Gb3, F3, Eb3, D3, C3. The key signature has three flats (Bb, Eb, Ab) and the time signature is 4/4.

15 Bb Minor Broken Chord



Musical notation for the Bb Minor Broken Chord, starting on middle C (C4) and spanning one octave. The notes are: C4, Bb3, Ab3, Gb3, F3, Eb3, D3, C3. The key signature has three flats (Bb, Eb, Ab) and the time signature is 4/4.

19



Musical notation for the Bb Minor Broken Chord, continuing from the previous block. The notes are: C4, Bb3, Ab3, Gb3, F3, Eb3, D3, C3. The key signature has three flats (Bb, Eb, Ab) and the time signature is 4/4.

23 Bb Minor Thirds



Musical notation for the Bb Minor Thirds, starting on middle C (C4) and spanning one octave. The notes are: C4, Bb3, Ab3, Gb3, F3, Eb3, D3, C3. The key signature has three flats (Bb, Eb, Ab) and the time signature is 4/4.

# G# Minor

1 G# Natural Minor



Musical notation for G# Natural Minor scale in 4/4 time, starting on G#4. The scale is: G#4, A4, B4, C#5, D5, E5, F#5, G#5. The notation shows the first four notes on a single staff.

3 G# Harmonic Minor



Musical notation for G# Harmonic Minor scale in 4/4 time, starting on G#4. The scale is: G#4, A4, B4, C#5, D5, E5, F#5, G#5. The notation shows the first four notes on a single staff.

5 G# Melodic Minor



Musical notation for G# Melodic Minor scale in 4/4 time, starting on G#4. The scale is: G#4, A4, B4, C#5, D5, E5, F#5, G#5. The notation shows the first four notes on a single staff.

7 G# Minor Arpeggio



Musical notation for G# Minor Arpeggio in 4/4 time, starting on G#4. The notes are: G#4, B4, D5, G#5. The notation shows the first four notes on a single staff.

8 G# Minor Broken Chord



Musical notation for G# Minor Broken Chord in 4/4 time, starting on G#4. The notes are: G#4, B4, D5, G#5. The notation shows the first four notes on a single staff.

13 G# Minor Thirds



Musical notation for G# Minor Thirds in 4/4 time, starting on G#4. The notes are: G#4, B4, D5, G#5. The notation shows the first four notes on a single staff.

# Eb Minor

1 Eb Natural Minor



Musical notation for Eb Natural Minor scale in 4/4 time, starting on Eb. The scale consists of eight notes: Eb, F, Gb, Ab, Bb, Cb, D, Eb.

5 Eb Harmonic Minor



Musical notation for Eb Harmonic Minor scale in 4/4 time, starting on Eb. The scale consists of eight notes: Eb, F, Gb, Ab, Bb, Cb, D, Eb. The interval between Bb and Cb is a major third.

9 Eb Melodic Minor



Musical notation for Eb Melodic Minor scale in 4/4 time, starting on Eb. The scale consists of eight notes: Eb, F, Gb, Ab, Bb, Cb, D, Eb. The interval between Bb and Cb is a major second.

13 Eb Minor Arpeggio



Musical notation for Eb Minor Arpeggio in 4/4 time, starting on Eb. The notes are Eb, Gb, Bb, Eb, Gb, Bb, Eb.

15 Eb Minor Broken Chord



Musical notation for Eb Minor Broken Chord in 4/4 time, starting on Eb. The notes are Eb, Gb, Bb, Eb, Gb, Bb, Eb.

20 Eb Minor Thirds



Musical notation for Eb Minor Thirds in 4/4 time, starting on Eb. The notes are Eb, Gb, Bb, Eb, Gb, Bb, Eb.

22



Musical notation for Eb Minor scale in 4/4 time, starting on Eb. The notes are Eb, F, Gb, Ab, Bb, Cb, D, Eb.

# D# Minor

1 D# Natural Minor



Musical notation for the D# Natural Minor scale, measures 1-4. The key signature has four sharps (F#, C#, G#, D#) and the time signature is 4/4. The notes are D#, E, F#, G, A, B, C, D#.

5 D# Harmonic Minor



Musical notation for the D# Harmonic Minor scale, measures 5-8. The notes are D#, E, F#, G, A, B, C, D# with natural minor alterations (marked with 'x') on the 6th and 7th degrees (F and G).

9 D# Melodic Minor



Musical notation for the D# Melodic Minor scale, measures 9-12. The notes are D#, E, F#, G, A, B, C#, D# with natural minor alterations (marked with 'x') on the 6th and 7th degrees (F and G) in the ascending direction.

13 D# Minor Arpeggio



Musical notation for the D# Minor Arpeggio, measures 13-14. The notes are D#, F#, A, C, D#.

15 D# Minor Broken Chord



Musical notation for the D# Minor Broken Chord, measures 15-19. The notes are D#, F#, A, C, D# in a broken chord pattern.

20 D# Minor Thirds



Musical notation for D# Minor Thirds, measures 20-21. The notes are D#, F#, A, C, D# in a thirds pattern.

22



Musical notation for the D# Minor scale, measures 22-25. The notes are D#, E, F#, G, A, B, C, D#.

# Ab Minor

1 Ab Natural Minor



Musical notation for the Ab Natural Minor scale in 4/4 time, starting on Ab. The scale consists of the notes: Ab, Bb, Cb, Db, Eb, Fb, Gb, Ab.

3 Ab Harmonic Minor



Musical notation for the Ab Harmonic Minor scale in 4/4 time, starting on Ab. The scale consists of the notes: Ab, Bb, Cb, Db, Eb, Fb, Gb, Ab, Bb, Cb, Db, Eb, Fb, Gb, Ab.

5 Ab Melodic Minor



Musical notation for the Ab Melodic Minor scale in 4/4 time, starting on Ab. The scale consists of the notes: Ab, Bb, Cb, Db, Eb, Fb, Gb, Ab, Bb, Cb, Db, Eb, Fb, Gb, Ab.

7 Ab Minor Arpeggio



Musical notation for the Ab Minor Arpeggio in 4/4 time, starting on Ab. The notes are: Ab, Bb, Cb, Db, Eb, Fb, Gb, Ab.

8 Ab Minor Broken Chord



Musical notation for the Ab Minor Broken Chord in 4/4 time, starting on Ab. The notes are: Ab, Bb, Cb, Db, Eb, Fb, Gb, Ab.

13 Ab Minor Thirds



Musical notation for the Ab Minor Thirds in 4/4 time, starting on Ab. The notes are: Ab, Bb, Cb, Db, Eb, Fb, Gb, Ab.

# A# Minor

1 A# Natural Minor



Musical notation for the A# Natural Minor scale, starting on middle C (C4) and ascending to G5. The notes are: C4, D4, E4, F#4, G4, A4, B4, C5, B4, A4, G4, F#4, E4, D4, C4.

5 A# Harmonic Minor



Musical notation for the A# Harmonic Minor scale, starting on middle C (C4) and ascending to G5. The notes are: C4, D4, E4, F#4, G4, A4, B4, C#5, B4, A4, G4, F#4, E4, D4, C4.

9 A# Melodic Minor



Musical notation for the A# Melodic Minor scale, starting on middle C (C4) and ascending to G5. The notes are: C4, D4, E4, F#4, G4, A4, B4, C#5, B4, A4, G4, F#4, E4, D4, C4.

13 A# Minor Arpeggio



Musical notation for the A# Minor Arpeggio, starting on middle C (C4) and ascending to G5. The notes are: C4, E4, G4, B4, C5, B4, A4, G4, F#4, E4, D4, C4.

15 A# Minor Broken Chord



Musical notation for the A# Minor Broken Chord, starting on middle C (C4) and ascending to G5. The notes are: C4, E4, G4, B4, C5, B4, A4, G4, F#4, E4, D4, C4.

19



Musical notation for the A# Minor Broken Chord, continuing from measure 15. The notes are: C4, E4, G4, B4, C5, B4, A4, G4, F#4, E4, D4, C4.

23 A# Minor Thirds



Musical notation for the A# Minor Thirds, starting on middle C (C4) and ascending to G5. The notes are: C4, E4, G4, B4, C5, B4, A4, G4, F#4, E4, D4, C4.

25



Musical notation for the A# Minor Thirds, continuing from measure 23. The notes are: C4, E4, G4, B4, C5, B4, A4, G4, F#4, E4, D4, C4.